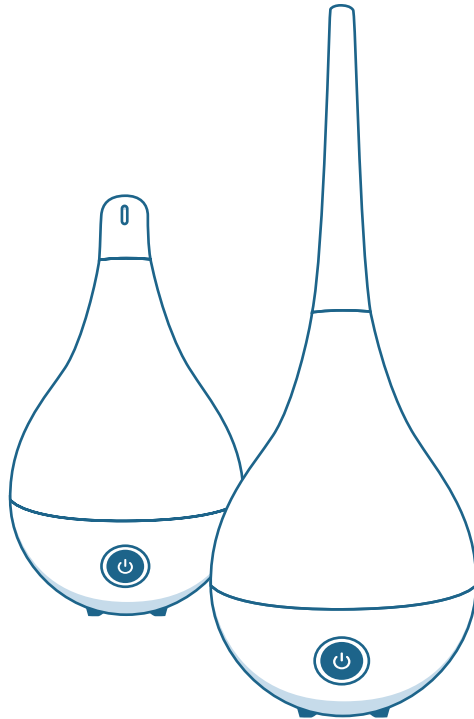




HUMIDEW



Ultrasonic Humidifier **DROP**

Product Manual

Contents

04

Part Description

05

Features & Specifications

06

Instructions

- Use
- Set the Mist Volume
- Set the Timer
- The Aroma Diffusion Function

10

Cleaning

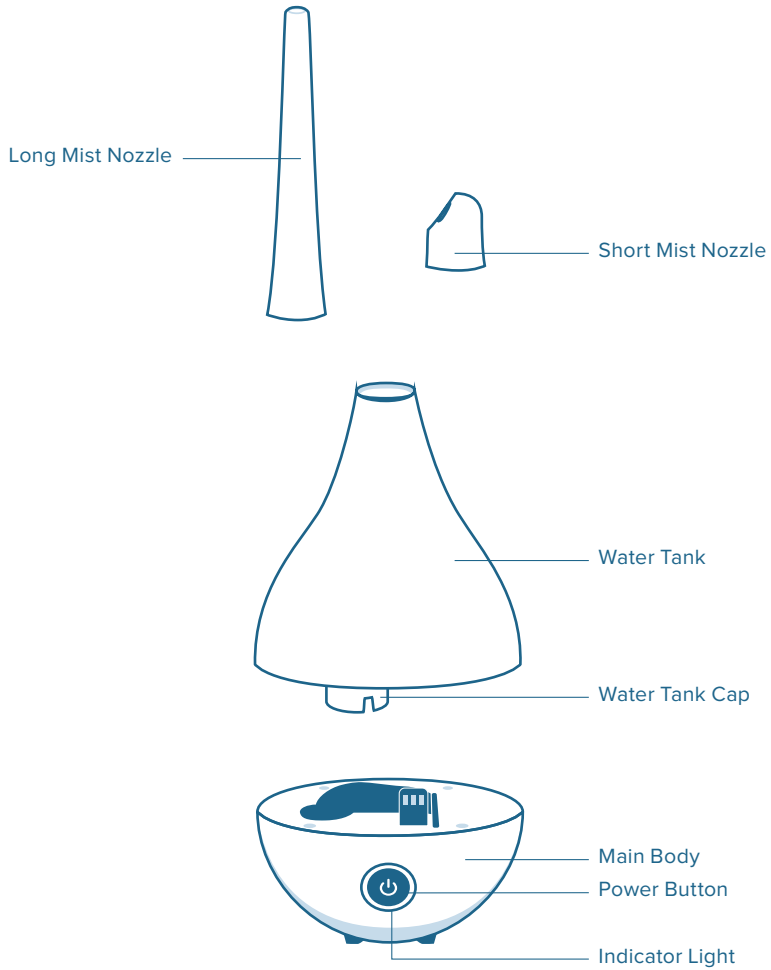
11

Safety Notices

12

Troubleshooting

Part Description



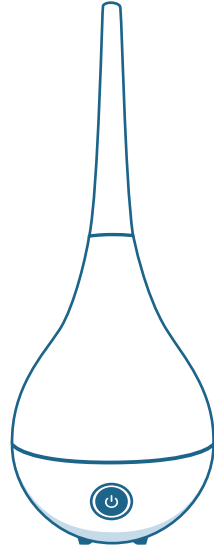
Features & Specifications



Washable



Timer



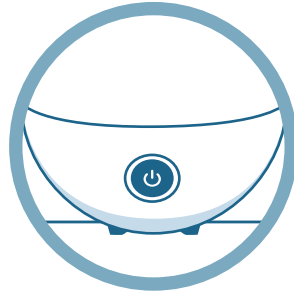
| | |
|----------------------------|---|
| Product Name | Ultrasonic Humidifier DROP |
| Model Number | GO-2016 (PP) |
| Rated Voltage | 100-240 V |
| Rated Frequency | 50/60 Hz |
| Rated Power | 16 W |
| Max. Output | 100 mL/h |
| Coverage Area | 400 sq ft |
| Water Tank Capacity | 1,6 L |
| Dimensions | 180 x 180 x 460 mm Long nozzle 180 x 180 x 300 mm Short nozzle |

Instructions

Use

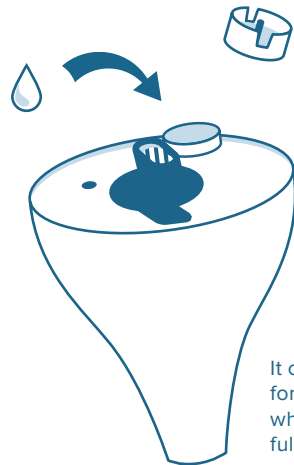
1

Place humidifier on a flat surface.



2

Detach the tank and hold it upside down. Turn to open the tank cap and pour clean water into the tank. Replace the cap and close it tightly. Attach the tank back to the base properly.



It can operate for over 6 hours when the tank is full of water.

3

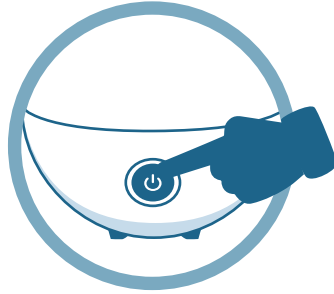
Connect to the power supply (100-240V 50/60Hz).

Press power button, indicator light is on and humidifier starts to operate.

Set the Mist Volume

1

Press the power button to adjust the mist output level. The Indicator light will change colors depending on which level is selected.

**Press Power Button****Indicator light (light up)****Mist Level**

First press

Red

Low

Second Press

Green

Medium

Third Press

Blue

High

Forth Press

Off

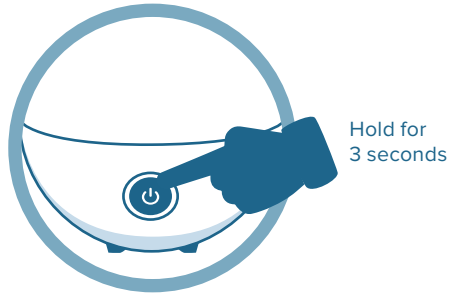
None

Set the Timer

1

Under low, medium or high mist level, hold power button for 3 seconds to enter time mode (red indicator light flashes, timer is preset as 2 hours).

In this mode, press down button lightly to adjust timer.



| Press Lightly | Indicator light (flash) | Timer |
|---------------|-------------------------|-------------------------------------|
| First press | Green | 4 hours |
| Second Press | Blue | 6 hours |
| Third Press | Red | Back to the preset time: 2 hours |

Notes:

Hold power button for 3 seconds again to cancel the timer.

When water tank is out of water, humidifier will shut down automatically for safety purpose. Indicator light flashes at the same time.

The Aroma Diffusing Function

1

Essential oils can be added directly into the water tank when filling, simply add 8 – 10 drops



Notes:

Do not pour hot water (above 40°C) into the water tank or reservoir.

Do not use ground water in order to prevent build up & malfunctions.

Do not pour water into the mist nozzle in order to prevent malfunction and risk of fire.

Close the tank cap tightly after refilling in order to prevent leakage.

The tank must be kept clean, if there is any dirt on the atomizer, clean it off gently with a small brush.

Cleaning



Power plug must be disconnected before cleaning.

Tank Cleaning

1

Clean the tank once every two to three weeks. Open the tank cap, wipe away scale with a soft cloth and rinse it with clean water.

Reservoir Cleaning

1

Clean the reservoir once every week. If there is any scale, wipe away with a soft cloth and rinse it with clean water.

Atomizer Cleaning

1

Gently remove any scale deposited on the atomizer (small round disk where water atomizes in the base) surface with the brush and rinse it with clean water.

Surface Cleaning

1

Soak a soft cloth in warm water (below 40°C), and wipe away stains on the humidifier surface. Rinse the mist nozzle with clean water.

Safety Notices



- 1.** When moving humidifier, lift up the base and water tank together. Do not only lift water tank.
- 2.** Do not press the electric cord with heavy objects in order to prevent electric shock or fire hazards.
- 3.** Do not use damaged plug or electric cord in order to prevent fire hazards.
- 4.** Do not replace electric cord by yourself. If it is damaged, please contact with our repair center or other qualified technicians to replace it.
- 5.** Do not unplug with wet hands in order to prevent electric shock or fire hazards. Shut down humidifier before detaching the water tank.
- 6.** Do not move humidifier when it is operating. If the base is not positioned on a flat and level surface, shut down humidifier and adjust its position.
- 7.** To prevent explosion or fire hazards, do not place humidifier near flammable articles.
- 8.** Do not place clothing or towels on top of humidifier. If the mist nozzle is covered or blocked, it may cause malfunction.
- 9.** Do not place substances such as metal, chemicals or detergent into the reservoir, since this will cause poor atomization.
- 10.** Do not operate humidifier when there is no water inside the water tank. Do not touch water in the reservoir during operation.
- 11.** Use power voltage and frequency in accordance with the technical specifications. Connect power plug properly in order to prevent fire hazards.
- 12.** Contact our company to purchase a new aroma diffuser when necessary.

Troubleshooting

| Fault | Cause | Treatment |
|---|---|--|
| Press power button, but indicator light does not light up. | 1. Power plug is not well connected. | 1. Reconnect the plug properly. |
| Indicator light is on and wind blows but there is no mist released. | 1. Water tank is empty. 2. Float sensor is not attached to water tank. | 1. Pour water into water tank. 2. Attach water tank to the base properly so that float sensor is connected to water tank. |
| Mist has an odor. | 1. The water in the tank is not clean. | 1. Open tank cap and leave it in open air for 12 hours, then wash tank and refill with clean water. |
| Indicator light is on, but both wind and mist are not produced. | 1. The water level inside water tank is too high. | 1. Pour out water inside reservoir and close tank cap tightly. |
| Mist level remains low. | 1. There is deposit of scale on atomizer. | 1. Clean atomizer and refill water tank with clean water. |
| Flashing light. | 1. Over filled water tank or release valve stuck. | 1. Adjust the water level, make sure cap is screwed on correctly & the release valve spring is functioning. Ensure that the dots on base & tank line up. |
| Mist leaks out from the water tank. | 1. Water tank is not attached to base properly. | 1. Attach water tank to base properly making sure tank & base are aligned. |

Above table enlists the most common problems regarding the operations of the product and their possible causes as well as suggested solutions. It is strictly for user's reference only.

Should there be any product malfunction or breakdown, Do NOT repair it yourself. Contact or Repair center or consult a licensed technician immediately.



HUMIDEW